

Office to let

North Office Bucharest

Bucharest, Sector 1, 42-46 Siriului



Building information

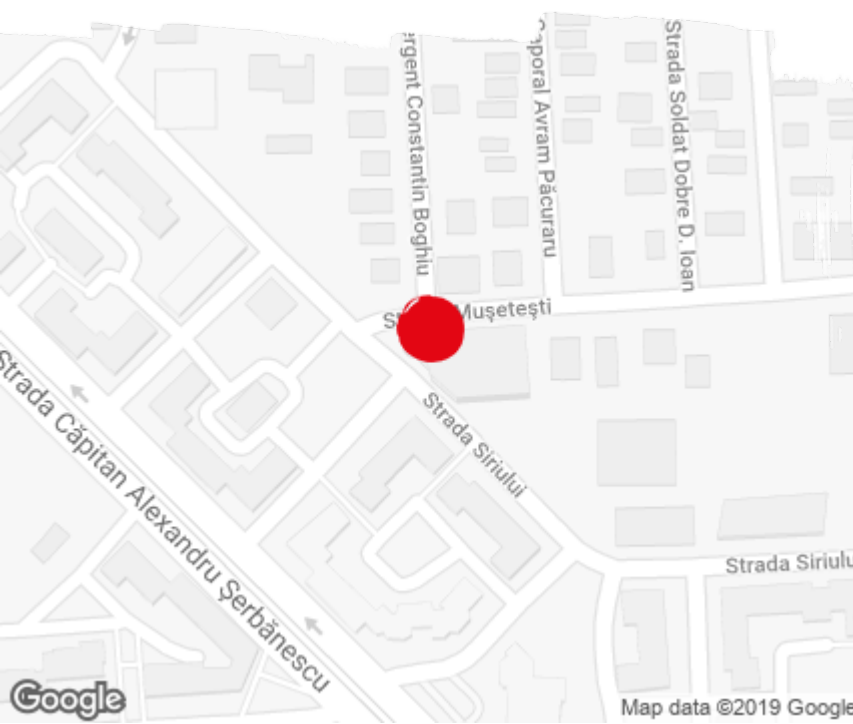
Building status	Existing
Year of construction	2011
Total building area	8 800 sq m

Commercial terms

Office space*	after login *
Parking	after login *
Service charge*	after login *
Availability	after login *

* Asking terms for m²/month

Location



Available space

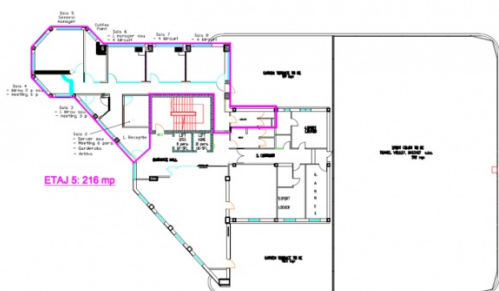
1 064 sq m

Available office space

60 sq m

Minimum office space

Typical floor plan



Available space

Floor	Vacant space	Availability
0 *	please contact us *	please contact us *
1	please contact us *	please contact us *
1	please contact us *	please contact us *
2	please contact us *	please contact us *
4	please contact us *	please contact us *
5	please contact us *	please contact us *
Total	after login *	

(*) Retail space

Public transport

Bus: 605

Contact



+40 21 302 3400

More information